

Library and Information Centre

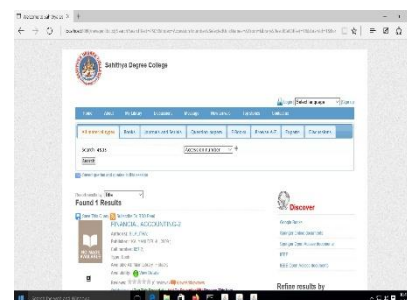
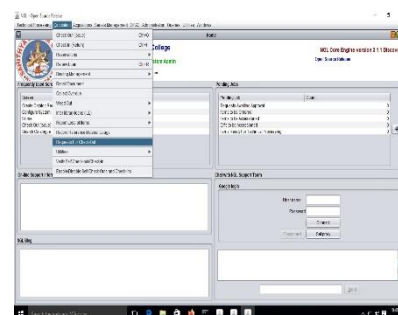
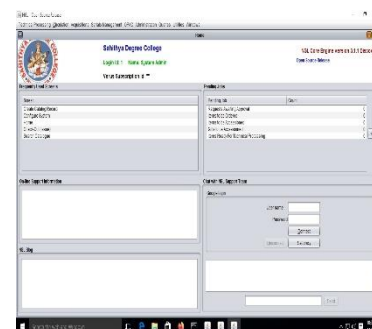
S.No.	Resources	No. Available
1	Library Book Titles	1026
2	Library Book Volumes	4869
3	Journals	11
5	e-Books	100000
6	e-Journals	1442
7	Databases	02
8	Dailies	05
9	Reprography	Yes
10	Digital Library	03
11	Seating Capacity	25

- ❖ Library Working Hours: 08:30AM to 06:00PM
- ❖ Circulation Section: 9:00AM to 4:30PM
- ❖ Book Returns: 9:00AM to 4:25PM
- ❖ Book Issues: 10:30AM to 4:25PM
- ❖ Reference Section: 9:00AM to 6:00PM

Library is automated using NewGenLib Library Management Software

The following Modules are
Available

- ❖ Technical Processing
- ❖ Circulation
- ❖ Acquisition
- ❖ Serial Management
- ❖ OPAC
- ❖ Administration
- ❖ Queries
- ❖ Utilities
- ❖ Reports



S.No.	Name of User	No. of Books	Loan Period
1	Student	4	15 days
2	Faculty Member	4	90 days
3	Non-Teaching Staff	2	30 days

Merit Card is issued to the students who scored more than 75% in a semester end examinations without backlogs.

OPAC (Online Public Access Catalogue) is provided to all the users to search the required document in the library.

S. No.	Type of E-Resource	No. of E-Resources
3	Swayam / NPTEL	800+ Course Videos
4	National Digital Library	4.5 Crore+ items in its repository with 1,500,000 volumes in English language

❖ Footfall of Teachers and Students :
11000

❖ Percentage per day usage of the library
by Teachers and Students: **25**

Library Budget		
Academic Year	Approved (INR in Lakhs)	Expenditure (INR in Lakhs)
2022-23	2.00	1.83
2021-22	2.00	1.77
2020-21	2.00	1.42
2019-20	1.50	1.03
2018-19	2.00	1.46